

RoHS Compliant

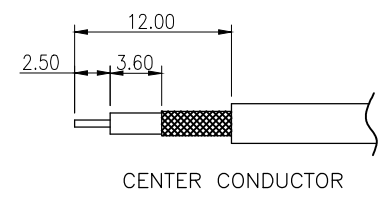
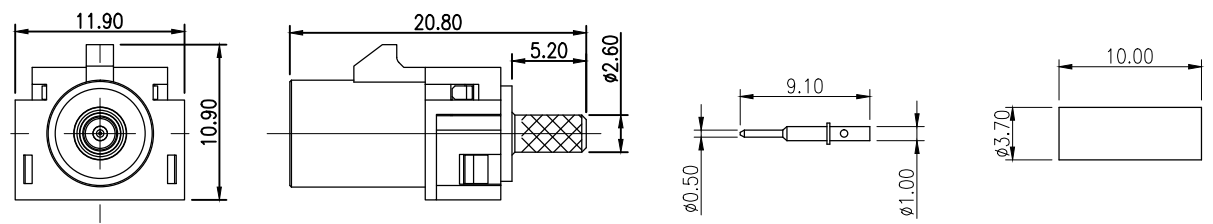
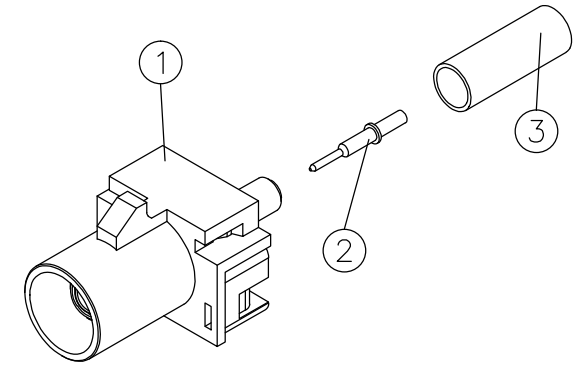
G2911-SERIES FAKRA CONNECTOR PLUG TYPE

REV	DATE	DESCRIPTION	ECN NO.	NAME
A	17.05.19	NEW RELEASE		Aaron
A1	17.09.30	⚠ DIM MODIFY		Aaron
A2	17.11.27	NEW SPECIFICATION		Tony

NOTE:

- MATERIAL:
PIN/BODY/CRIMP TUBE:BRASS
HOUSING/COVER:
HIGH TEMPERATURE PLASTIC, UL94V-0, COLOR: SEE ORDER INFORMATION
- PLATING:
CONTACT: Au 1~3u"
BODY/CRIMP TUBE: OVER 50 u" MIN. Ni UNDERPLATED OVERALL.
- PACKING: PE BAG
- KEYING CODE (SEE ORDER INFORMATION)
- ORDER INFORMATION:
G2911-0100XX01-00

- CODING CHOOSE
- 00:CODING-C,SIGNAL BLUE
 - 01:CODING-A,DEEP BLACK
 - 02:CODING-B,CREAM WHITE
 - 03:CODING-D,BORDEAUX VIOLET
 - 04:CODING-E,LEAF GREEN
 - 05:CODING-F,BROWN
 - 06:CODING-G,BLUE GRAY
 - 07:CODING-H,VIOLET
 - 08:CODING-I,BEIGE
 - 09:CODING-K,CURRY YELLOW
 - 10:CODING-L,CARMINE RED
 - 11:CODING-M,PASTEL ORANGE
 - 12:CODING-N,PASTEL GREEN
 - 13:CODING-Z,WATER BLUE



3	CRIMP TUBE
2	PLUG PIN
1	FAKRA PLUG TYPE

GENERAL TOLERANCE	WIESON TECHNOLOGIES CO., LTD	PART NO.: G2911-0100XX01-00	
		DRAWN BY: Tony	DRAWING NO.: G2911-0100XX01-00
X.X = ±0.20	CHECKED BY: HSIEN	DRAWING SIZE: 2: 1	A4
X.XX = ±0.15	APPROVED BY: HSIEN	UNIT: mm	
X.X* = ±3*	SORTING NO.: WST	PAGE: 1 OF 2	

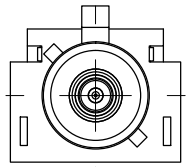
RoHS Compliant

REV	DATE	DESCRIPTION	ECN NO.	NAME
A	17.05.19	NEW RELEASE		Aaron
A1	17.09.30	⚠ DIM MODIFY		Aaron
A2	17.11.27	NEW SPECIFICATION		Tony

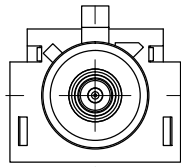
G2911-SERIES FAKRA CONNECTOR PLUG TYPE

A
B
C
D
E

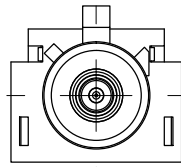
COLDING-C



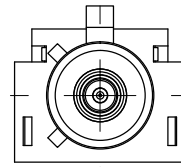
COLDING-A



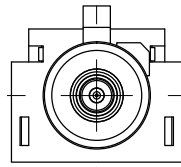
COLDING-B



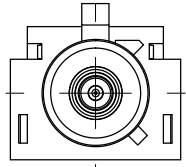
COLDING-D



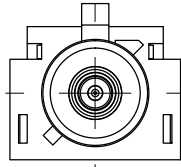
COLDING-E



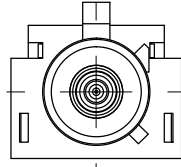
SIGNAL BLUE (RAL:5005)
G2911-01000001-00
COLDING-F



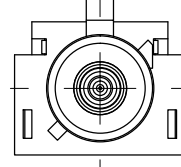
DEEP BLACK (RAL:9005)
G2911-01000101-00
COLDING-G



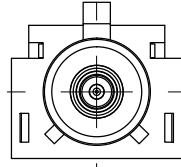
CREAM WHITE (RAL:9001)
G2911-01000201-00
COLDING-H



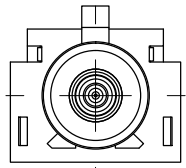
BORDEAUX VIOLET (RAL:4004)
G2911-01000301-00
COLDING-I



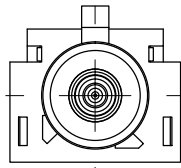
LEAF GREEN (RAL:6002)
G2911-01000401-00
COLDING-K



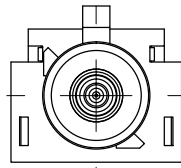
BROWN (RAL:8011)
G2911-01000501-00
COLDING-L



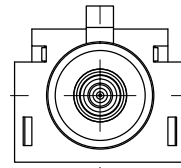
BLUE GARY (RAL:7031)
G2911-01000601-00
COLDING-M



VIOLET (RAL:4003)
G2911-01000701-00
COLDING-N

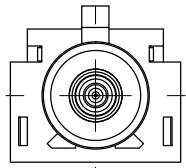


BEIGE (RAL:1001)
G2911-01000801-00
COLDING-Z

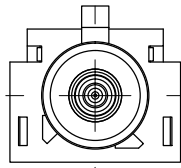


CURRY YELLOW (RAL:1027)
G2911-01000901-00

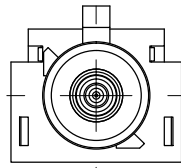
CARMINE RED (RAL:3002)
G2911-01001001-00



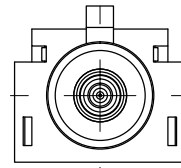
PASTEL ORANGE (RAL:2003)
G2911-01001101-00



PASTEL GREEN (RAL:6019)
G2911-01001201-00



WATER BLUE (RAL:5021)
G2911-01001301-00



GENERAL TOLERANCE X.X = ±0.20 X.XX = ±0.15 X.X* = ±3°	WIESON TECHNOLOGIES CO., LTD		PART NO.: G2911-0100XX01-00	
	DRAWN BY	Tony	DRAWING NO.	G2911-0100XX01-00
	CHECKED BY	HSIEN	DRAWING SIZE	2: 1 A4
	APPROVED BY	HSIEN	UNIT	mm
	SORTING NO.	WST	PAGE	2 OF 2